



MILLBROOK POWER
PROJECT

Millbrook,
Bedfordshire

Statement of Community Consultation

September 2014

www.millbrookpower.co.uk

This Statement of Community Consultation ("SoCC") is published in connection with a proposed up to 299 MW gas-fired power station, its integral gas and electrical connections and other related infrastructure at Rookery South Pit situated in the Marston Vale, approximately 3 km north of Ampthill and 7 km south-west of Bedford in Central Bedfordshire (the "Project").

The capacity of the Project will be in excess of 50 MW of electricity. As such, it is classified as a Nationally Significant Infrastructure Project under the Planning Act 2008. The Project therefore requires a Development Consent Order ("DCO") in order for it to be built. Any DCO would be made by the Secretary of State for Energy & Climate Change.

This SoCC is part of a consultation process, required by the Planning Act 2008. This SoCC explains how Millbrook Power Limited (the promoter of the Project) proposes to consult people living in the vicinity of the Project, businesses and other organisations about the Project, in advance of submitting an application for a DCO for the Project in 2015.

MPL has consulted Central Bedfordshire Council and Bedfordshire Borough Council, as the local planning authorities, about the content of this Statement of Community Consultation and has had regard to their responses.

Millbrook Power Limited (MPL) is a company established by Watt Power Limited. Watt Power Limited is seeking to develop gas fired power stations at Rookery South Pit and elsewhere in the UK to support the UK Government's drive to a low carbon economy.

A consultation/communication plan has previously been developed and is available from MPL or via its website www.millbrookpower.co.uk.

This SoCC explains:

- some details about the Project ;

- how MPL is publishing preliminary environmental information about the Project;
- how MPL is going to consult local people and communities about the Project and what activities will be undertaken to give them access to information about the proposal and help them to understand what particular aspects of the proposal may mean to them, enabling them to provide informed feedback;
- how people can become involved in shaping the Project before a DCO application is submitted by putting forward their views to influence the Project, particularly regarding specific options under consideration; and
- how people can provide feedback to MPL from consultation activities and ensure that they are informed about the Project.

The Project

The key details of the proposed Project are:

- the construction of a Power Generation Plant with a rated electrical output of between 50 and 299 MW of electricity. The plant will have up to 5 stacks, each up to 40 m in height. It will include a new purpose built access road from Green Lane to the site of the generating element of the Project;
- the site for the Generating Equipment covers an area of approximately 4 ha;
- the Power Generation Plant will produce electricity from natural gas. As such, fuel for the Power Generation Plant will be provided by an underground pipeline connection and will not be delivered by road to the site;
- it will include the construction of a new electrical connection (up to 500 m in length) to the National Grid and the construction of a new underground pipeline (up to 1600 m in length) to bring natural gas to the Power Generating Plant from the National Transmission System;
- it will create approximately 150 jobs during a construction period lasting two years and create up to 15 permanent jobs once commercial operations have begun;
- it responds to the UK Government's need for new gas generation in order to underpin the country's energy security and its transition to a low-carbon economy;
- the station would emit about 50% less carbon dioxide (CO₂) than an equivalent sized coal-fired power plant, and is designed to operate flexibly so that it can respond quickly and efficiently to short-term variation in customer demand and intermittent output from wind power generation; and

- it is acknowledged that during construction and operation there is potential for negative impacts on some local communities and the environment, for example noise from the operation of the Power Generation Plant, the visual impact of the stacks and impacts on the local and regional transport network as a result of construction traffic. An Environmental Impact Assessment ("EIA") is being undertaken to understand and seek to reduce these and other potential effects of the Project's construction and operation. An Environmental Statement will be submitted as part of the application for a DCO for the Project. More information on this process is provided below. The EIA process is also considering the potential positive effects of the operation of the Project.

The Planning Process

DCO applications for Nationally Significant Infrastructure Projects are submitted to the Planning Inspectorate which will process and examine the application before making a recommendation on that application to the relevant Secretary of State. The final decision on the application is made by the Secretary of State and if it is successful, a DCO will be made.

The Government's policies in relation to Nationally Significant Infrastructure Projects are set out in National Policy Statements (NPSs). The proposed Project has been developed with regard to the relevant Energy NPSs, in particular EN-1 (Energy), EN-2 (Fossil Fuel Electricity Generating Infrastructure), EN-4 (Gas Networks Infrastructure) and EN-5 (Electricity Networks Infrastructure). EN-1 states that *"gas will continue to play an important role in the electricity sector- providing vital flexibility to support an increasing amount of low-carbon generation and to maintain security of supply."*

When determining a DCO application, the Secretary of State must have regard to the relevant NPSs and must make a decision in accordance with these unless other considerations apply, including where she/he is satisfied that the adverse impact of a proposed development would outweigh its benefits.

When considering whether to accept an application for examination, the Planning Inspectorate must be satisfied that the applicant has undertaken effective pre-application consultation. Pre-application consultation is essential in allowing MPL to understand and minimise the impacts of the Project and to allow a thorough examination by the Planning Inspectorate. MPL is required to submit a Consultation Report with its application for a DCO. This report will include details of the local community feedback received, explain how MPL has had regard to relevant feedback and will detail how MPL has complied with the consultation requirements of the Planning Act 2008.

The community consultation described in this statement is carried out under Section 47 of the Planning Act 2008. It is in addition to consultation that will be carried out with specific statutory consultees (such as nature conservation bodies) and those with relevant interests in land (including owners and occupiers within the Project boundary) under Section 42 of the Planning Act 2008. It is also in addition to wider notification of the Project under Section 48 of the Planning Act 2008.

Information on the planning process for Nationally Significant Infrastructure Projects and the NPSs can be found at:

<http://infrastructure.planningportal.gov.uk/>

www.decc.gov.uk/en/content/cms/meeting_energy/consents_planning/nps_en_infra/nps_en_infra.aspx

Environmental Information & Impacts

The Project will be designed and developed to meet or exceed current quality, safety and environmental standards and efforts will be made to minimise its impact on the local environment, both during its construction and its operation. The extent and scale of the development and MPL's proposals to mitigate its impacts will be consulted upon locally and will be amongst the issues considered by the Planning Inspectorate on behalf of the Secretary of State.

Because of the nature and size of the Project, MPL is undertaking an EIA pursuant to the Infrastructure Planning (Environmental Impact Assessment) Regulations 2009.

Therefore, the Project is classed as an EIA development. The EIA considers the likely significant environmental effects of the Project including those on air and water quality, noise, visual and cumulative impact, traffic, local ecology, archaeology and heritage and socio-economics.

MPL has consulted with various statutory bodies concerning the scope of the EIA, including local authorities, the Environment Agency, the Highways Agency, Natural England and utility providers. A request for a Scoping Opinion was submitted to the Planning Inspectorate on June 20th 2014, accompanied by a Scoping Report. The Scoping Report outlines which environmental topics will be covered by the EIA and how the assessments will be undertaken. The Planning Inspectorate issued its formal Scoping Opinion on July 28th 2014.

These documents are available on the Millbrook Power website (www.millbrookpower.co.uk) and via the dedicated section on the Planning Inspectorate's website:

<http://infrastructure.planningportal.gov.uk/projects/eastern/millbrook-power/>

As part of the pre-application consultation materials on the proposed Project, MPL will publish a Preliminary Environmental Information Report ("PEIR") and a non-technical summary ("NTS") of the same. The PEIR presents the information gathered to date and provides the results of MPL's preliminary assessments as to the likely significant environmental effects of the Project. It does not set out the final findings but will include information on provisional mitigation measures. During consultation, MPL will make available details on landscaping proposals and other measures to mitigate the Project's impact. MPL will provide copies of the PEIR and the NTS to Central Bedfordshire Council and Bedford Borough Council as the local planning authorities. Both documents will also be made available at: the main office of Central Bedfordshire Council in Chicksands, Shefford; at the main office of Bedford Borough Council in Bedford; local libraries; at public exhibitions and on the MPL website.

When the EIA process is complete and MPL submits its application for a DCO, it will be accompanied by an Environmental Statement. This will report on the likely

significant environmental effects of the Project identified in the EIA and will explain the mitigation measures to avoid or reduce these.

Public Consultation

The views of the local community about the Project are important. In June 2014, MPL carried out a non-statutory consultation process sharing its initial plans with the public at three exhibitions held in Lidlington, Stewartby and Marston Moretaine. At the exhibitions and since, MPL has received and responded to comments on the proposed Project and its impact on the environment, local communities and the local economy.

a. *What are we now consulting on and when?*

In the statutory phase of consultation commencing on 13th October 2014 (and finishing on 16th November 2014), MPL will seek views on the overall scope and impact of the Project, including the integral electrical connection and gas connection. Only after MPL has had regard to the consultation responses received will the application for a DCO for the Project be finalised and submitted.

Responses will, in particular, be invited on:

- The layout of the Power Generation Plant within the Project Site;
- Route option(s) for accessing the gas and electricity connection infrastructure during construction and maintenance;
- The preferred route option for the gas connection; and
- The proposed electrical connection
- The findings of the preliminary assessment on the likely significant environmental effects of the Project during construction and operation, as set out in the PEIR.

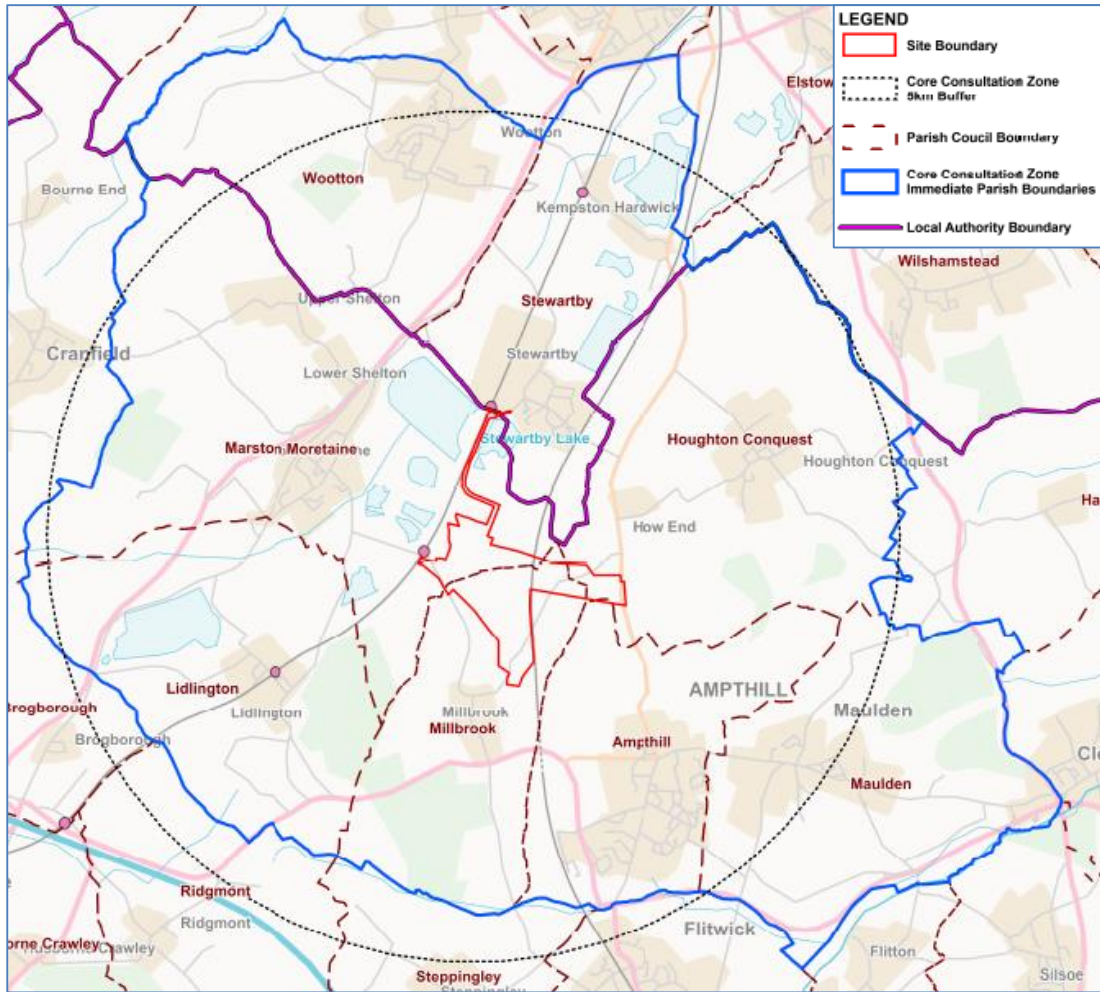
The consultation explained in this Statement will run for 35 days ending on 16th November 2014. Comments about the project must be received by MPL by this date.

b. *Who will we consult with?*

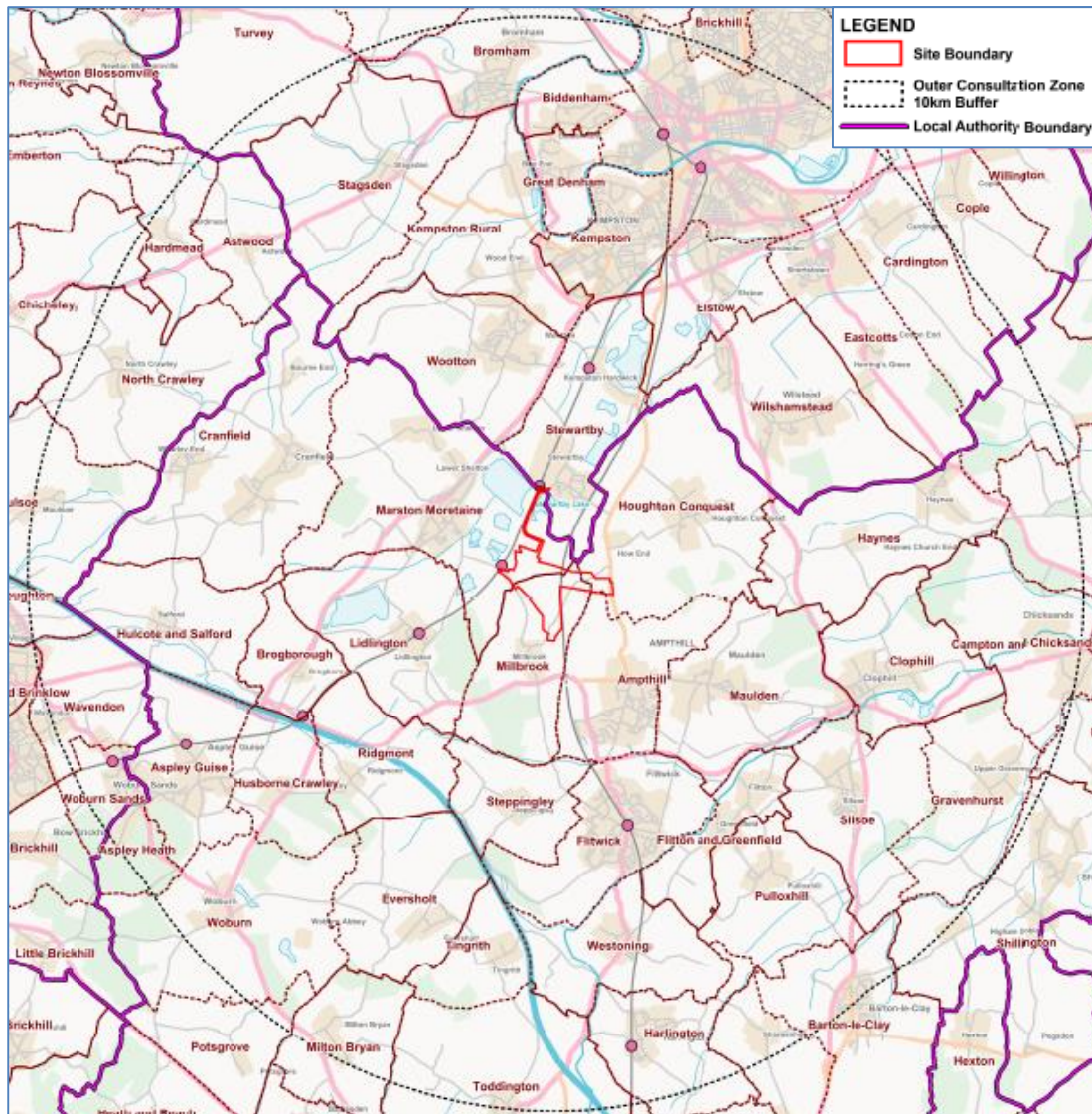
The Planning Act 2008 states that those *'living in the vicinity of the land'* should be consulted. We have discussed the scope of our consultation with Central Bedfordshire Council and Bedford Borough Council as the local planning authorities, and have identified and agreed the Consultation Zones that form the basis of our community consultation.

MPL will carry out its community consultation activities in two areas: a Core Consultation Zone (CCZ) that equates to a 5 km radius from the Power Generation Plant Site and an Outer Consultation Zone (OCZ) that equates to a radius of 10 km. These consultation zones were chosen following feedback from local elected representatives and are in accordance with those used by Covanta for the Rookery South Energy from Waste Generating Station, even though the impact of the Project is expected to be considerably less than the Energy from Waste scheme.

The CCZ has been designed to include the main population areas in the vicinity of the Power Generation Plant Site that have the potential to be impacted by the Project and expected to have the greatest interest in the Project. The zone includes all or parts of the following parish council areas: Marston Moreteyne, Millbrook, Houghton Conquest, Ampthill, Maulden, Lidlington, Stewartby and Wootton. An information leaflet will be sent to households, businesses and institutions in the CCZ and the CCZ will be the focus of public exhibitions.



Proposed CCZ – approx. 5 km radius from the Power Generation Plant Site



Proposed OCZ – 10 km radius from the Power Generation Plant Site

Communities within the OCZ will be informed about the Project (via newspaper advertisements, posters, media coverage and contact with parish councils and other relevant local organisations in the OCZ) and given the opportunity to comment on our plans for the Project. The outer zone includes the main population area of Bedford.

MPL does not anticipate that the communities and businesses that lie within the OCZ will be significantly impacted by the Project's construction and operation although MPL recognises that those living and working within the OCZ may be interested in the Project. Outside the two zones, there may well be others interested in MPL's plans. These people will also be reached through local/regional newspaper advertising and media coverage (print, broadcast and social media). Feedback that is received within

the consultation period will be considered by MPL as it finalises its proposals for the Project.

c. How will we consult?

MPL will seek and receive people’s views through a number of activities:

- Public exhibitions will be held at Lidlington, Marston Moretaine, Stewartby and Ampthill within the CCZ (see the table below for locations and dates of the public exhibitions);
- An information leaflet will be sent to households, businesses and institutions in the CCZ, and made available at local council offices, local libraries and other civic community venues in the area. The leaflet will also be sent to those groups that are defined as “hard to reach” (such as the Community Engagement Network, the Older People’s Reference Group and the Youth Parliament). It will give background on the Project, the consultation process and how individuals can engage in the consultation. The leaflet will be made available at libraries and council offices in the OCZ;
- Copies of the leaflet, the SoCC, The Preliminary Environmental Information Report and the Non-Technical Summary as well as other information about the Project will be available (in addition to the main council offices of Central Bedfordshire Council and Bedford Borough Council) at Marston Vale Forest Centre, Marston Moretaine, MK43 0PR which is open seven days a week between 10.00am and 4.00pm, as well as the following libraries:

Bedford Library Harpur Street, Bedford, MK40 1PG	Mon/Tues/Wed/Fri 09.00 – 18.00 Thurs 09.00 – 13.00 Sat 09.00 – 17.00 Sun Closed
Ampthill Library, 1 Dunstable Street, Ampthill, Bedford, MK45 2NL	Mon/Wed/Fri 10.00 – 18.00 Tues Closed Thurs 14.00 – 18.00 Sat 10.00 – 13.00 Sun Closed
Wootton Library Lorraine Road, Wootton, MK43 9LH	Mon/Fri 14.00 – 18.00 Tues Closed

	Wed	10.00 – 1300 / 1400 -18.30
	Thurs	Closed
	Sat	10.00 – 13.00
	Sun	Closed

- The information leaflet and other information about the Project can be made available in other formats (eg large print or braille) and languages upon reasonable request;
- A website (www.millbrookpower.co.uk) provides information on the Project as well as access to documents, and provide visitors with the opportunity to ask questions or make comments online;
- An e-mail address to which individuals can write to provide their feedback is info@millbrookpower.co.uk;
- A Freepost mailbox to which people can send questions or comments is Freepost RTE-JYYB-ERSR, Millbrook Power Ltd 49 York Place, Edinburgh EH1 3JD;
- MPL will also notify the local community about the Project and the consultation events via posters on local noticeboards, newspaper advertisements and media coverage;
- In addition, MPL will contact a broad spectrum of local stakeholders. These will include elected representatives, local community, special interest groups (including those “*hard to reach groups*” such as the Community Engagement Network, the Older People’s Reference Group and the Youth Parliament), and local business groups. MPL will provide them with information on the Project and undertake briefings where appropriate.

Individuals and organisations wishing to respond should include their name and an address where correspondence about the response can be sent. Responses may be made public, subject to data protection laws.

Comments made at any stage of the consultation process will be recorded and carefully considered by MPL as part of the process of preparing the final proposals for its application to the Planning Inspectorate.

KEY DATES	
Mid September	Statement of Community Consultation published
13 th October	Consultation period starts
31 st October – 4 th November	PUBLIC EXHIBITIONS
Friday 31 st October, 1500-1900	Marston Moretaine Village Hall, Bedford Road, Marston Moretaine, MK43 0LD
Saturday 1 st November, 0900-1300	Stewartby Village Hall, Stewartby Way, Stewartby, MK43 9LX
Monday 3 rd November 1600-2000	Ampthill Masonic Centre, Old Court House, Church Street, Ampthill, MK45 2PL
Tuesday 4 th November, 1100-1500	Lidlington Village Hall, High Street, Lidlington, MK43 0RT
16 th November	Consultation period closes
Late February 2015	DCO application submitted

Contact details

MPL welcomes questions and comments:

Website: www.millbrookpower.co.uk

Email: info@millbrookpower.co.uk

Post: Freepost RTE-JYYB-ERSR, Millbrook Power Ltd 49 York Place,
Edinburgh EH1 3JD

Phone: 0131 550 3380